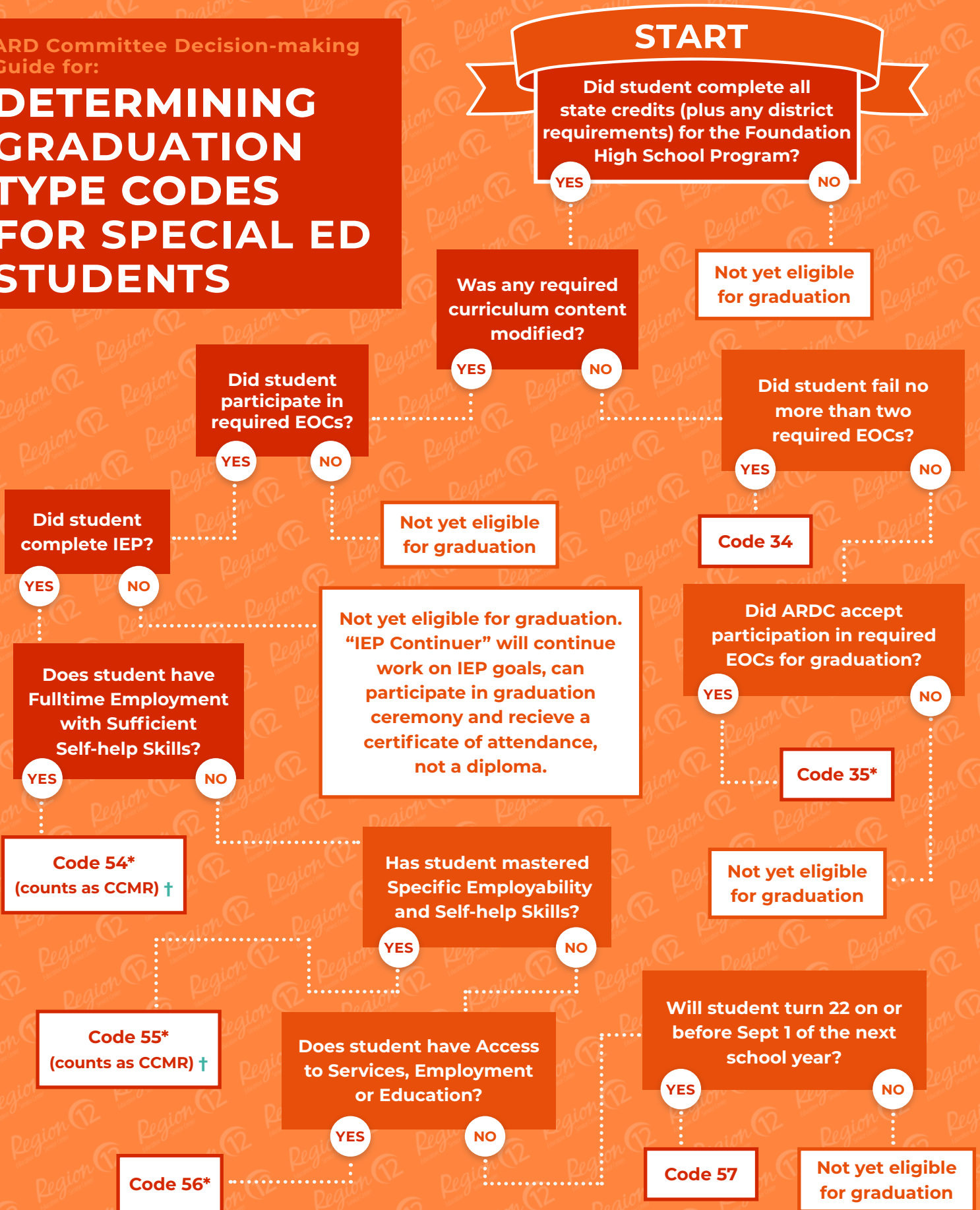


ARD Committee Decision-making Guide for:

DETERMINING GRADUATION TYPE CODES FOR SPECIAL ED STUDENTS



* Students who graduate with codes 35, 54, 55 or 56 may return for additional IDEA services.
† CCMR (College Career or Military Ready) is a factor in state accountability. Graduation Type Codes 54 and 55 count for CCMR.

ARD Committee Decision-making Guide for: DETERMINING ENDORSEMENTS FOR STUDENTS RECEIVING SPECIAL EDUCATION SERVICES

The student is eligible for endorsement if all five of the following requirements are met:

1. The student has completed the Foundation High School program, with or without modifications to required curriculum.
2. The student has completed the additional credit requirements in math, science and elective courses required for the endorsement, with or without modified curriculum.
3. The student has completed the four endorsement-specific courses, with or without modifications to the curriculum.
4. If any curriculum was modified in the four endorsement-specific courses, the student's admission, review and dismissal committee (ARDC) determined that the curriculum, as modified, was sufficiently rigorous.
5. The student has passed required EOCs, or the student's ARDC has determined that the student is not required to achieve satisfactory performance on an end-of-course assessment instrument to earn an endorsement.

Refer to 19 Texas Administrative Code Section 89.1070 - Adaptions for Special Populations: Graduation Requirements.

ADDITIONAL COLLEGE, CAREER AND MILITARY READINESS (CCMR) QUALIFIERS FOR SPECIAL EDUCATION STUDENTS

Graduation Type Code 54: requires that the student has obtained full-time employment, based on the student's abilities and local employment opportunities, in addition to mastering sufficient self-help skills to enable the student to maintain the employment without direct and ongoing educational support of the local school district.

Graduation Type Code 55: requires demonstration of mastery of specific employability skills and self-help skills that do not require direct ongoing educational support of the local school district.

Graduate Under an Advanced Degree Plan: requires that the graduation plan type is identified as Foundation High School Plan with an Endorsement, or Foundation High School Plan with a Distinguished Level of Achievement.

PEIMS Note:

Fall & Summer Submission

Individual Graduation Committee, Endorsement, Distinguished Level Achievement

Fall Submission

Graduation Type, IEP Continuer, Certifications

Questions?

Contact your district Transition and Employment Services Designee.